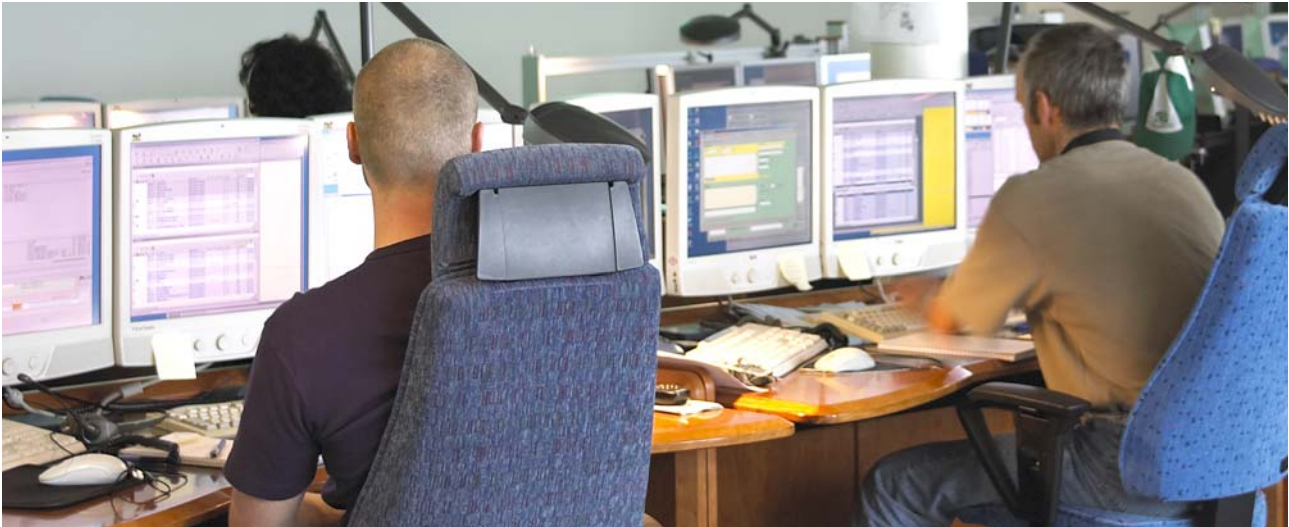


MINI-LINK™ Manager

Powerful centralized management system



MINI-LINK Manager is the common environment for all Ericsson microwave radio products. It provides efficient and effective management, which are keys to successful operation of a communications network - keeping the costs low and network availability high. This means detecting, localizing, and fixing faults quickly, minimizing labor, equipment, and training costs, while ensuring maximum performance and security.

Key Benefits

- Single point of entry for all microwave products
- High network availability
- Fast and accurate information
- Grow as network expands

MINI-LINK Manager enables you, from a single screen, to manage your entire fixed and mobile microwave transmission networks. It provides a common environment for all microwave solutions and systems from Ericsson, and it can be customized to suit your business style and philosophy. It can also provide a gateway to all other industry-standard management systems. MINI-LINK Manager focuses on providing maximum availability of network capacity,

which means downtime will be minimized and revenue-generating traffic maximized, 24 hours a day, every day of the year.

MINI-LINK Manager improves the productivity of your skilled staff by providing them in a speedy manner with accurate and high-quality information, and by relieving them from performing trivial recurring tasks.

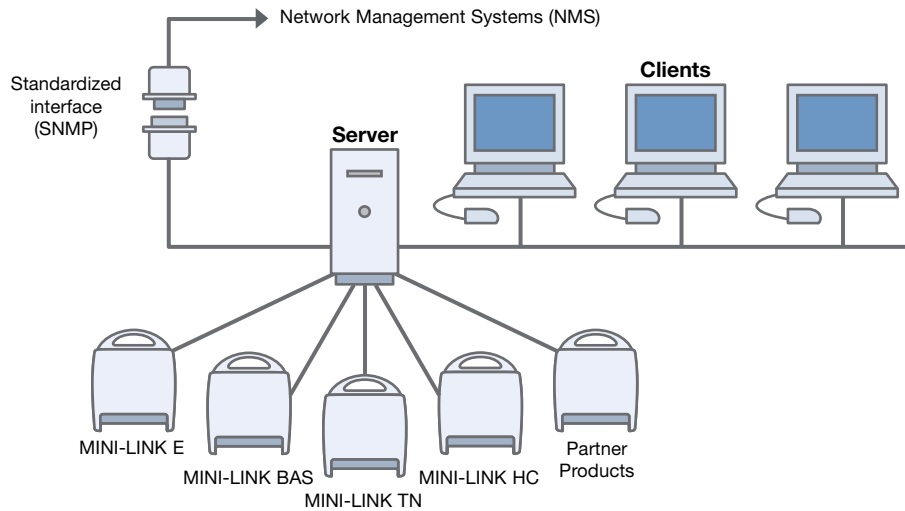
MINI-LINK Manager has been created to meet network growth that matches the one of your business, and investments accordingly. The unrestricted scalability of MINI-LINK Manager enables you to expand your management system as your microwave network grows.

MINI-LINK Manager is a technology-specific network element manager. It is found above the NE specific element management layer, but below the network-wide cross-domain network management layer and provides:

- Fault Management
- Configuration Management
- Performance Management
- Security Management
- Inventory Management
- Performance Management

MINI-LINK Manager consists of just two software modules:

- MINI-LINK Manager Server Application - a network management engine
- MINI-LINK Manager Client Application - a single point of entry for all management tasks



Technical data

Hardware requirements

The exact hardware platform varies depending on the need for performance, availability, history log, number of adaptations and applications etc. The platform specifications described below serve as general hardware recommendations.

MINI-LINK Manager server:

Central Processor Unit	Intel Xeon (with Hyper-threading) > 2 GHz
Primary memory	1 Gbyte
Un-removable media	20 Gbyte disk
Removable media	CD-ROM and 3.5" diskette
Tape Drives	20/40-GB DAT
Monitor	1280x1024 True Color resolution
DCN connection	10/100 BaseT LAN
Interfaces	2 USB ports
Operating System	Microsoft Windows 2003 Server

MINI-LINK Manager client:

Central Processor Unit	Intel Pentium4 (with Hyper-threading) > 2 GHz
Primary memory	512 Mbytes
Un-removable media	4 Gbyte disk
Removable media	CD-ROM and 3.5" diskette
Screen	1280x1024 True Color resolution
DCN connection	10/100 BaseT LAN
Interfaces	USB port
Operating System	Microsoft Windows XP Professional (SP1a)

MINI-LINK Manager terminal server

Central Processor Unit	Intel Xeon (with Hyper-threading) > 2 GHz
Primary memory	2 Gbyte
Un-removable media	20 Gbyte disk
Removable media	CD-ROM and 3.5" diskette
Screen	1280x1024 True Color resolution
DCN connection	10/100 BaseT LAN
Interfaces	USB port
Operating System	Microsoft Windows 2003 Server

Ericsson AB

Transmission & Transport Networks
 SE-431 84 Mölndal, Sweden
 Telephone +46 31 747 00 00
 Fax +46 31 27 72 25
 www.ericsson.com

EN/LZT 712 0169 R4

© Ericsson AB 2004

All technical data is typical and is subject to change without notice