



Fast Ethernet



Managed Dual fiber Link Access/Media Conversion device

This document describes the management functionality of the **DLA22Mxx** series. For other features and functionality of the device see the main data sheet of the DLA22 (DSB106). These devices are In-Band SNMP managed and do not require a separate network connection. The SNMP frames are being transmitted and received only via the F/O uplinks of the device to prevent local users from accessing the network management.

The **DLA22M** series converters may be remotely managed from any SNMP management station running popular management platforms

available (e.g. HP Openview, SNMPc etc.). The device supports MIB II (RFC1213 and RFC1215) and FibroLAN's private MIBs.

Physical Interface: The front panel of the device includes a RS-232 (miniDIN) connector for terminal connection to be used during the initial setup phase and 2 LEDs: Ready (indicating that the SNMP agent is installed, operational and successfully passed self test) and RCV - when blinking, indicates that a SNMP frame is being received or transmitted.

Key Features

- Reduce maintenance costs
- In-Band connection
- Full device status
- Overrides user initiated changes
- Full device commands
- Prevents user interventions
- Failure early alert

Specifications

Port Related Functions

Monitor	Command
TP ports 1,2 Link	
F/O ports 1,2 Link	
TP ports 1,2 Duplex mode	
F/O ports 1,2 Duplex mode	Set F/O ports 1,2 Duplex mode
TP ports 1,2 auto-negotiation enabled/disabled	Enable/Disable auto-negotiation TP ports 1,2
TP ports 1,2 data rate	TP Ports 1,2 disconnect/connect

Device Related Functions

Monitor	Command
VLAN mode (enabled/disabled)	Set VLAN mode
View VLANs	Set VLANs
Link Test (FEF) In/Out	Set FEF mode
Operation Mode (Back-up/other)	Set Operation Mode
Device Internal Temperature	Reset device

Alerts

The managed device will initiate a SNMP alert (trap) to the network manager upon the occurrence of any of the following events:

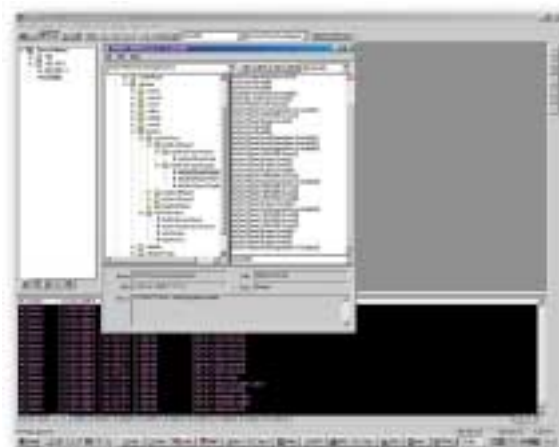
- Link UP ► Link DOWN (any port)
- Link DOWN ► Link UP (any port)
- Power ON
- Temperature exceeds pre-set threshold
- Activation of any of the mode set-up switches
- Any remote change of any parameter (Commands, as above)

System Information

- System Up-time
- System Contact
- System Location
- System Description

Ordering Information

See DSB106



Specifications subject to change without prior notice

International:
Fibrolan Ltd., Yoqneam Star Building
 P.O.Box 544, Yoqneam Illit 20692, Israel
 Tel.: Int.+972-4-959-1717, Fax.: Int.+972-4-959-1718
 www.fibrolan.com e-mail: info@fibrolan.com

