



## Managed 3:1 Fiber Local Traffic Aggregator

This document describes the management functionality of the **LTA31Mxx** family. For other features and functionality of the device see the main data sheet of the LTA41 (DSB104). These devices are In-Band SNMP managed and do not require a separate network connection. The SNMP frames are being transmitted and received only via the F/O uplink of the device to prevent local users from accessing the network management.

The **LTA31M** series converters may be remotely managed from any SNMP management station

running popular management platforms available (e.g. HP Openview, SNMPc etc.). The device supports MIB II (RFC1213 and RFC1215) and FibroLAN's private MIBs.

**Physical Interface:** The front panel of the device includes a RS-232 (miniDIN) connector for terminal connection to be used during the initial setup phase and 2 LEDs: Ready (indicating that the SNMP agent is installed, operational and successfully passed self test) and RCV - when blinking, indicates that a SNMP frame is being received or transmitted.

## Key Features

- Reduce maintenance costs
- In-Band connection
- Full device status
- Overrides user initiated changes
- Full device commands
- Prevents user interventions
- Failure early alert

## Specifications

### Port Related Functions

Monitor	Command
TP ports 1,2,3 Link	TP ports 1,2,3 disconnect/connect (see VLAN)
F/O port Link	
TP ports 1,2,3 Duplex mode	Set TP ports 1,2,3 Duplex mode
F/O port Duplex mode	Set F/O port Duplex mode
TP ports 1,2,3 auto-negotiation enabled/disabled	Enable/Disable auto-negotiation TP ports 1,2,3
TP ports 1,2,3 data rate	Set data rate TP ports 1,2,3

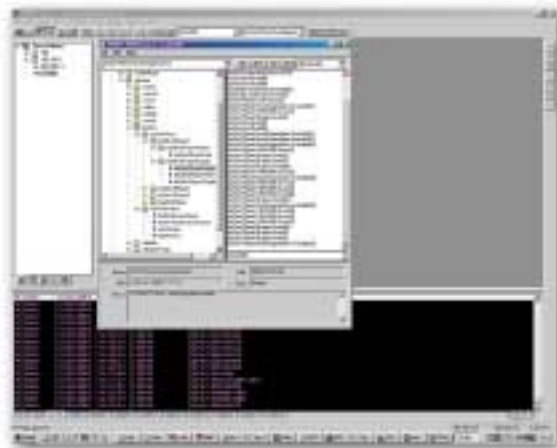
### Device Related Functions

Monitor	Command
VLAN mode (enabled/disabled)	Set VLAN mode
View VLANs	Set VLANs
Link Test (FEF) In/Out	Set FEF mode
Device Internal Temperature	Reset device

### Alerts

The managed device will initiate a SNMP alert (trap) to the network manager upon the occurrence of any of the following events:

- Link UP ► Link DOWN (any port)
- Link DOWN ► Link UP (any port)
- Power ON
- Temperature exceeds pre-set threshold
- Activation of any of the mode set-up switches
- Any remote change of any parameter (Commands, as above)



### System Information

- System Up-time
- System Contact
- System Location
- System Description

### Ordering Information

See DSB104

Specifications subject to change without prior notice

#### International:

**Fibrolan Ltd.**, Yoqneam Star Building  
 P.O.Box 544, Yoqneam Illit 20692, Israel  
 Tel.: Int.+972-4-959-1717, Fax.: Int.+972-4-959-1718  
 www.fibrolan.com e-mail: info@fibrolan.com

